
Step 1 - Install UniPrint Utility

1. Open your Internet browser
2. Enter www.uniprint.net
3. Select **Downloads\Uniprint Clients** menu
4. Click **Uniprint Client for Windows** or **Uniprint Client for Mac** if you are installing on a Macintosh.

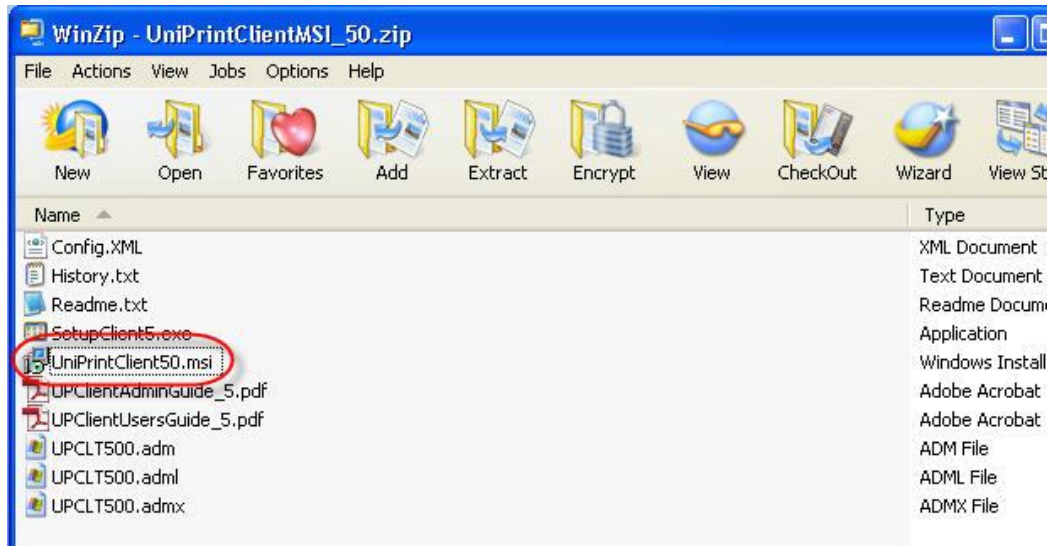


5. Click **MSI** and save the file to your local computer where you can locate it. This could be your desktop or your Documents folder. The file is called UniprintClientMSI_xx.zip. The xx is the version number like 50, so the file would be UniprintClientMSI_50.zip in this case.



6. Double click on the UniprintClientMSI_50.zip file you saved to your computer to open the file. Remember the 50 in the filename is the version number so it may be different from the file name you see in the folder; for example UniprintClientMSI_51.zip.
7. Double click on the UniprintClient50.msi file to run the Uniprint install program.

8. Select the default options when you install the program.



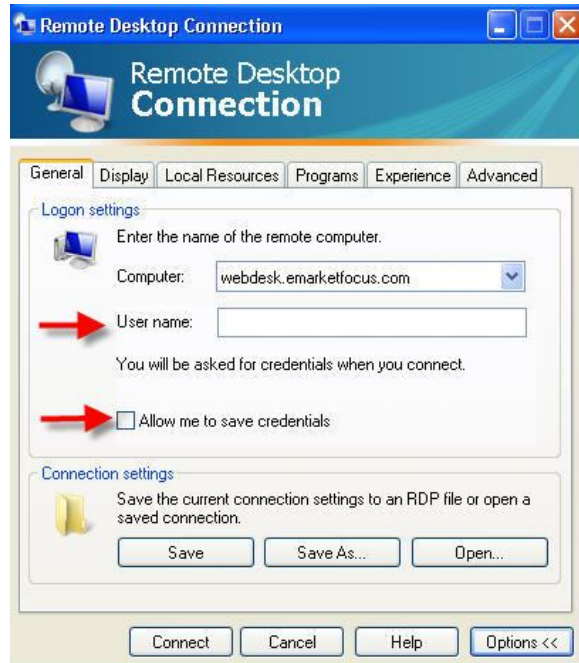
Step 2 - Remote Desktop Connection Setup

Follow these steps to setup a remote connection for the WebDesk:

1. Open the Remote Desktop Connection utility by selecting **Start \ All Programs \ Accessories \ Remote Desktop Connection**. It may also be **Start \ All Programs \ Communications \ Remote Desktop Connection**
2. If you can't find the Remote Desktop shortcut, try the following:
 - On Vista, Windows 7, select **Start** and enter **mstsc** and press **Enter**.
 - On XP, select **Start \ Run**, enter **mstsc** and press **Enter**.
3. The Remote Desktop Connection window appears. In the Computer field type in **webdesk.emarketfocus.com** and then click **Options**



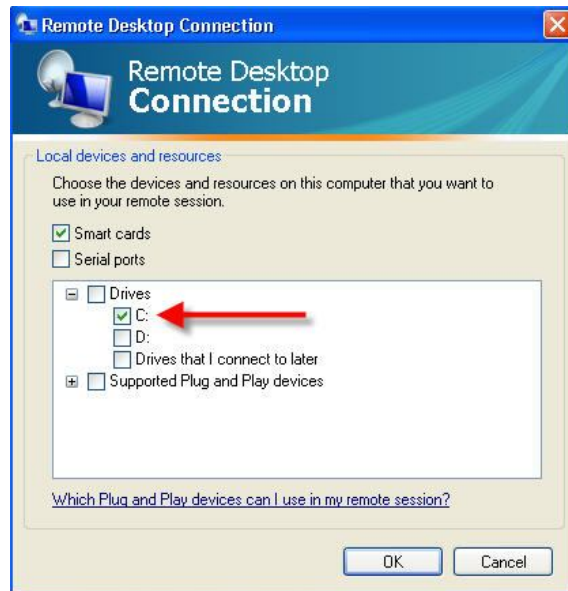
4. Enter the user name we emailed you into the **User name** field.
5. Click **Allow me save credentials** checkbox if you don't want to enter your name every time you log into the webdesk.



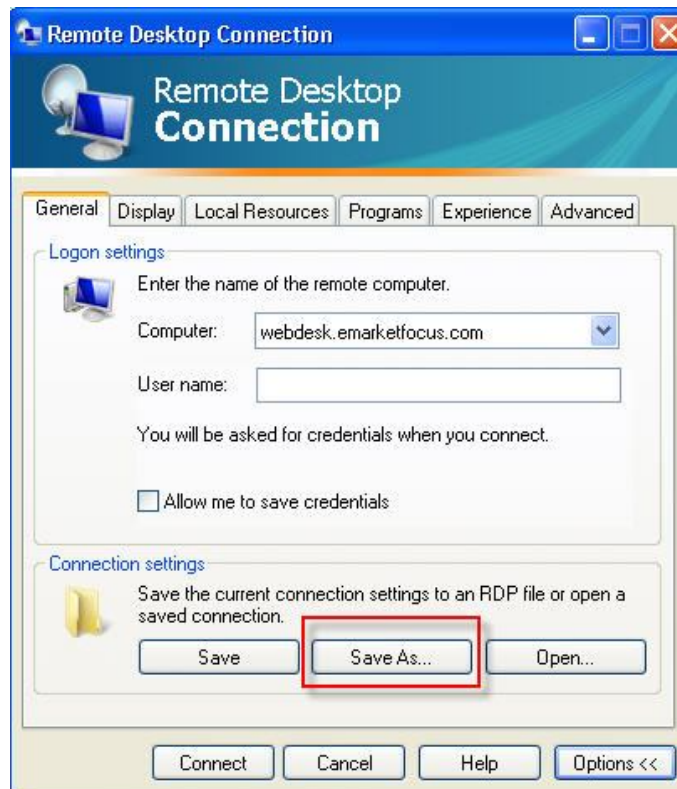
6. Click the **Local Resources** tab. Set the **Remote computer sound** to **Do not play**. Click **More**.



7. Click the plus next to the **Drives** option, and select the **C:** drive. This allows you to copy files from your local computer to the Internet WebDesk.
8. Click **OK**.

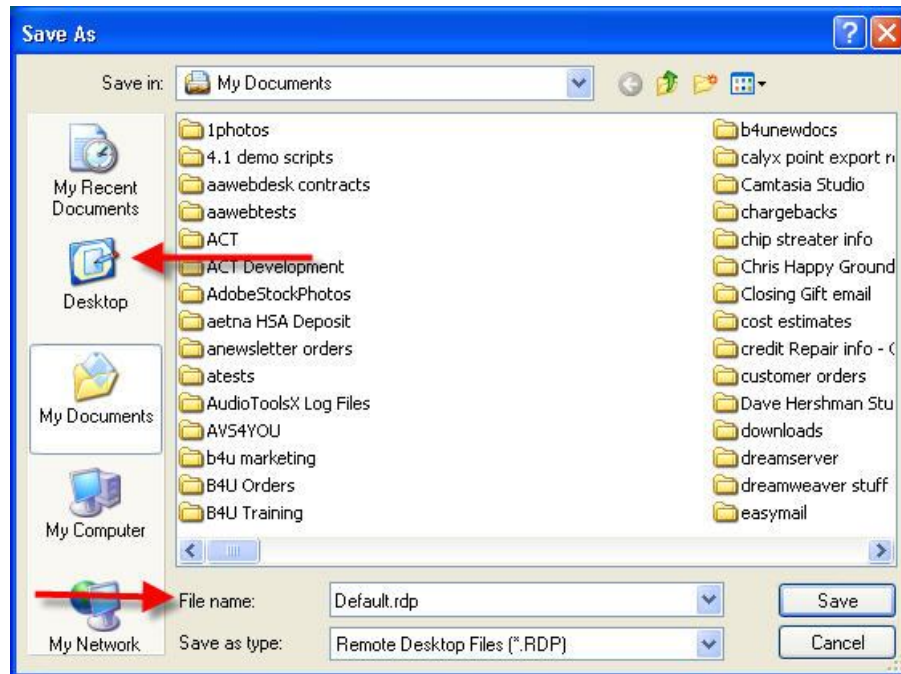


9. We are now going to save your settings to your desktop so you can find it easily to access the WebDesk. Click **Save** and then **Save As**.



10. Click **Desktop** icon.

11. Enter **Mortgage Quest Webdesk** or **Market Quest Webdesk** in the filename field and click **Save**.



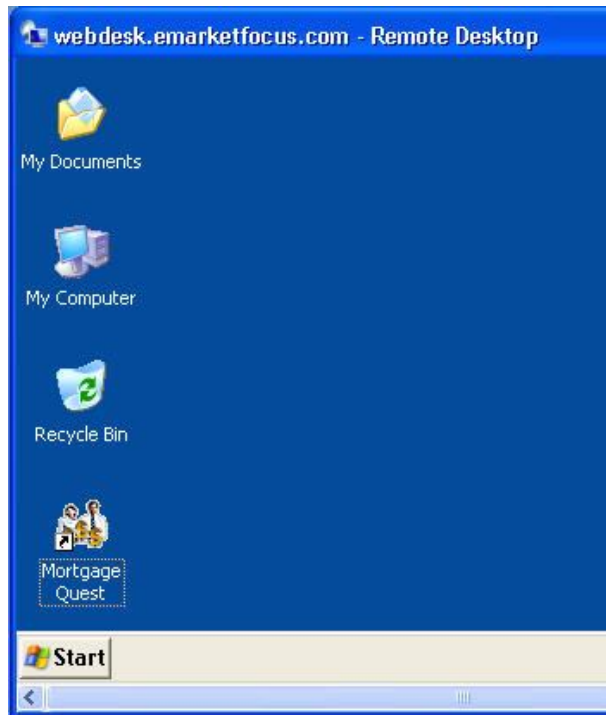
12. Close the screen and find the Remote Desktop icon on your desktop.
13. Double click on the Remote Desktop icon to connect to the webdesk.



14. Enter your username and password and click **OK**.



15. When you have connected to the webdesk, a window appears as shown below. Double click on the Mortgage Quest or Market Quest icon to launch the program.



16. When you are finished using the Webdesk, close all applications and click Start \ Logoff on the remote desktop to close the window.